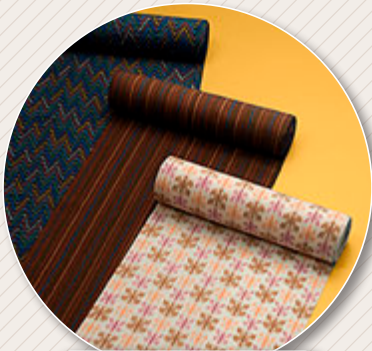


# Traditional Crafts of Tokyo



**Tama Ori**  
(Tama Woven Fabrics)



**Edo Hake**  
(Edo Brushes)



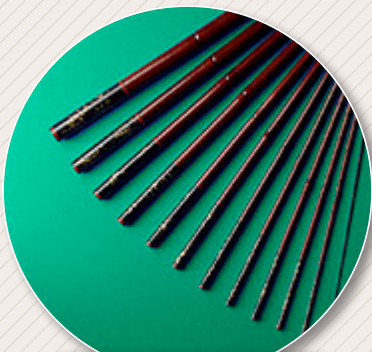
**Tokyo Honzome Yukata-Tenugui**  
(Indigo-Dyed Summer Kimono-Tenugui)



**Tokyo Gakubuchi**  
(Picture Frames)



**Edo Sarasa**  
(Printed Silk Calico)



**Edo Wazao**  
(Bamboo Fishing Rods)



**Tokyo Chokin**  
(Metal Carvings)



**Edo Moku-Hanga**  
(Woodblock Prints)



**Tokyo Shippo**  
(Cloisonne Enamelware)



**Tokyo Yogasa**  
(Tokyo Umbrella)

## TOKYO Brand Agricultural, Forestry and Livestock Products



**Ashitaba**  
(*Angelica keiskei*)



**Udo**  
(*Aralia cordata*)



**Komatsuna**  
(Japanese mustard spinach)



**TOKYO X**  
(Pig)



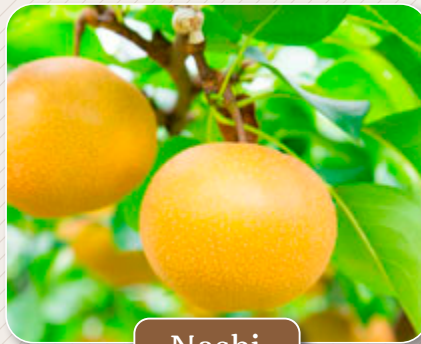
**Tokyo Shamo**  
(Gamecock)



**Phoenix roebelenii**  
(Phoenix spp.)



**Bouvardia**



**Nashi**  
(Japanese pear)



**Tokyo Wood – Woods produced in Tama area**



**Spearfish**

## TOKYO Brand Fisheries Products



**Okutama Yamame**



**Red Snapper**